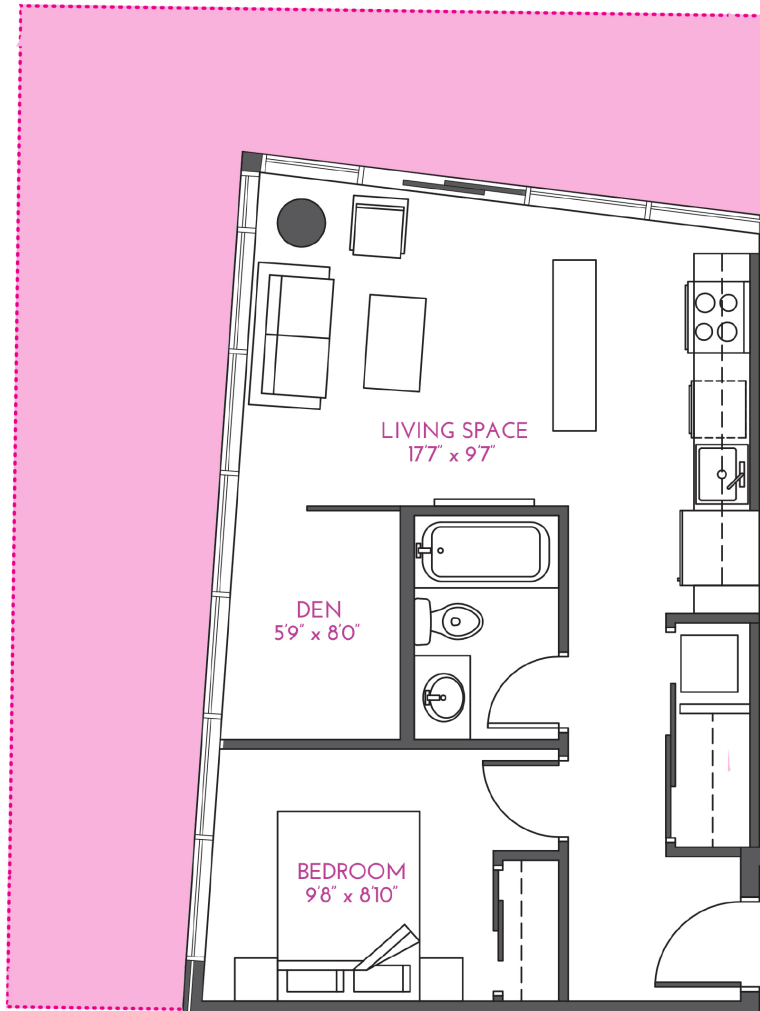


PLAN 02

1 Bed + Den



Details:

- 519 sqft interior • 950 sqft terrace • \$232/mo condo fees • storage locker included
- titled parking available to purchase

Specs:

- Industrial styling • polished concrete floors • exposed 9'6" ceilings • stainless steel appliances
- in-suite laundry • quartz countertops • gas BBQ hookups • central air conditioning

Immediate Possessions Available

Call or text 403.305.2893

Tour by appointment 624 8 Ave SE

www.battistella.ca/ink



All measurements are approximate and floorplans are subject to change.